



SCHEFE ENTERPRISES PTY LTD
 T/A SCHEFE BUILDERS/ DIXON HOMES MARANOVA
 QSBA LICENCE NO. 1053415
 315 Northern Road, Roma
 Ph.: (07) 4622 4107
 Fax: (07) 4622 7294

www.schefebuilders.com.au

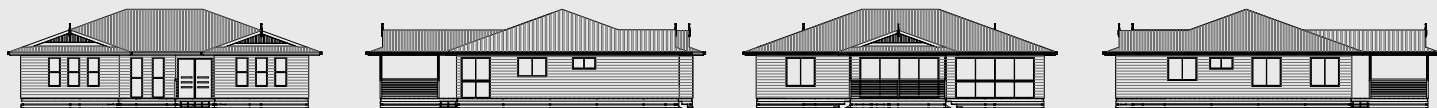
TRADITIONAL HOMES SILVERTON



15.00m x 12.30m

floorplan unscaled
 (furniture is only artist's impression)

The silverton has subtle blends of modern and traditional architecture. This home has great street appeal. The longer length windows allow more natural light to stream into the home. The main living area concentrated at the back of the house. The large alfresco deck is great for family get togethers and a barbecue with friends. Every available space in this homes design is utilised. This allows the home to have a study area for a home office. With the beautiful balance of design and use of space the Silverton is a wonderful family home.



Total area 192.66 m²
4 BEDROOMS & Study
Bath & Ensuite