



SCHEFE ENTERPRISES PTY LTD
 T/A SCHEFE BUILDERS/ DIXON HOMES MARANOVA
 QSBA LICENCE NO. 1053415
 315 Northern Road, Roma
 Ph.: (07) 4622 4107
 Fax: (07) 4622 7294

www.schefebuilders.com.au

BRICK HOMES BARRINGTON

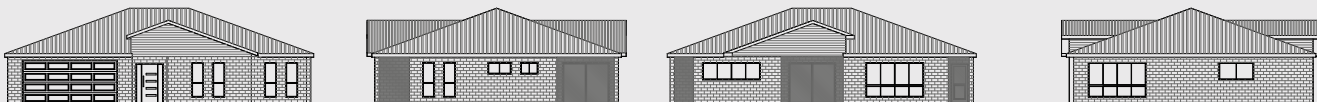


The Barrington is a nice 3 bedroom home with an integrated garage. The asymmetric roofline features a modern design and turns a simple brick home into something special. The offsets in the facade open up the square floorplan and create covered outdoor areas which provide the space for private retreats. Use these spots to enjoy a cup of tea while you are reading the paper or just sit down and relax in the shade. The attached garage makes live easy. Only a short way to carry the groceries inside. The big bild-in-robos provide lots of storage space.



floorplan unscaled
 (furniture is only artist's impression)

15.79m x 12.69m



Total area 200.38 m²
3 BEDROOMS
Bath & Ensuite