



SCHEFE ENTERPRISES PTY LTD  
 T/A SCHEFE BUILDERS/ DIXON HOMES MARANOVA  
 QSBA LICENCE NO. 1053415  
 315 Northern Road, Roma  
 Ph.: (07) 4622 4107  
 Fax: (07) 4622 7294  
 www.schefeblders.com.au

BRICK HOMES  
**WOODFORD**

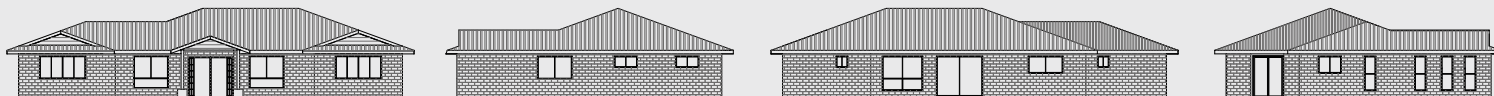


The Woodford is a grand, majestic home. All the luxuries are prominent in this beautiful home starting from the entry foyer. The parent retreat offers the opportunity to be independent from the children. The sunroom is a wonderful place to chill out and watch your television programs or read without interruption. It also has an ensuite and walkin robe. This home offers 4 bedrooms with a study close to the parents retreat. The expansive alfresco area is the place to entertain friends and family.



*floorplan unscaled*  
 (furniture is only artist's impression)

19.99 m x 13,79 m



**Total area 232.09 m<sup>2</sup>**  
**4 BEDROOMS**  
**Bath & Ensuite**