



SCHEFE ENTERPRISES PTY LTD
 T/A SCHEFE BUILDERS/ DIXON HOMES MARANOA
 QSBA LICENCE NO. 1053415
 315 Northern Road, Roma
 Ph.: (07) 4622 4107
 Fax: (07) 4622 7294
 www.schefeblders.com.au

STARTER HOMES/ INVESTMENT HOMES
TEELBA
 from \$ 181,520.00

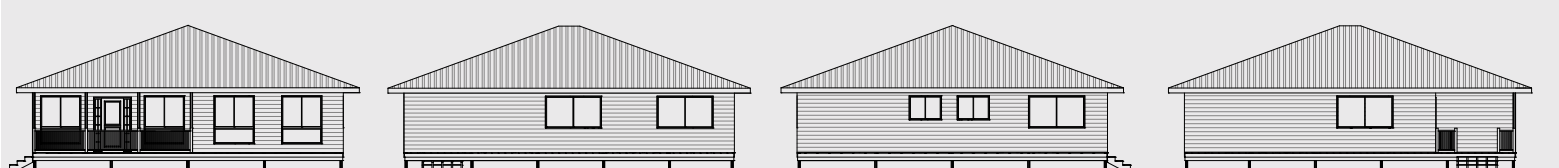


floorplan unscaled
 (furniture is only artist's impression)

11.63m x 12.43m



The offset kitchen is a great feature in the Teelba design. This segregates the lounge room from the large open dining and kitchen area. There is so much room in the wonderful covered alfresco deck, a great place to be on lazy days and for BBQs. Teelba has three bedrooms all with built in robes. This home will welcome you from the street and surprise you once entering inside.



Total area 144.56 m²
3 BEDROOMS