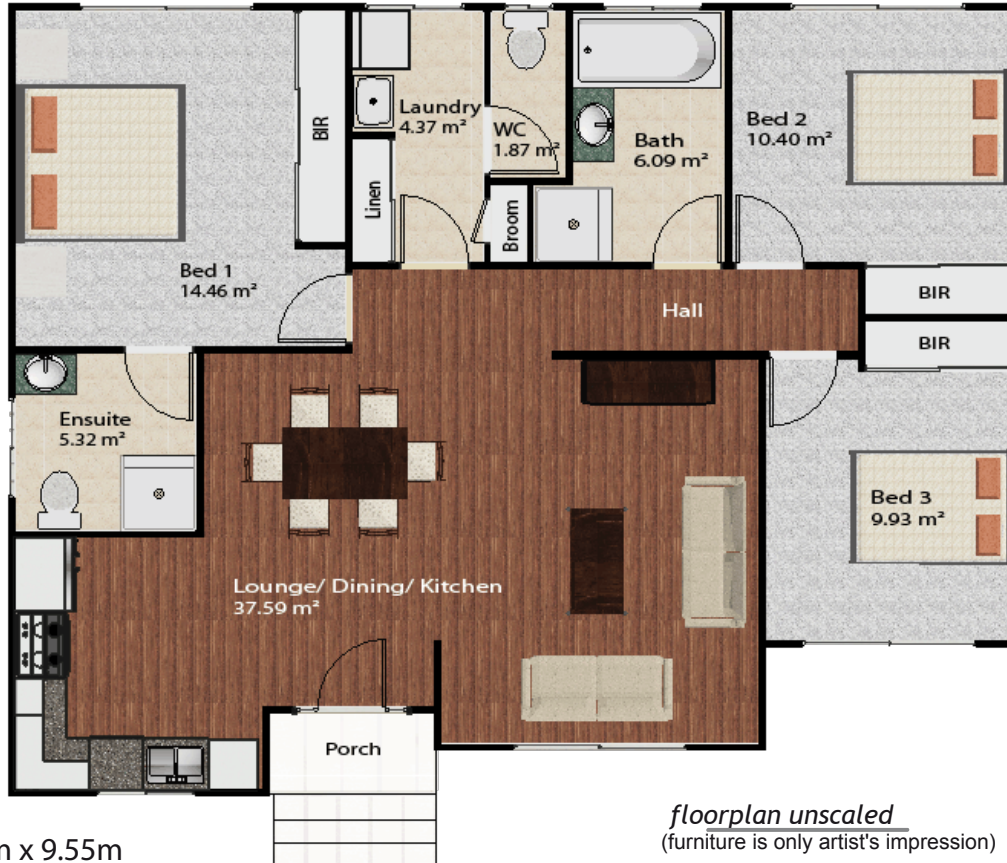




SCHEFE ENTERPRISES PTY LTD  
 T/A SCHEFE BUILDERS/ DIXON HOMES MARANOVA  
 QSBA LICENCE NO. 1053415  
 315 Northern Road, Roma  
 Ph.: (07) 4622 4107  
 Fax: (07) 4622 7294  
 www.schefeblders.com.au

STARTER HOMES/ INVESTMENT HOMES  
**OXFORD**  
 from \$ 162,307.00



12.20m x 9.55m

*floorplan unscaled*  
 (furniture is only artist's impression)

The Oxford has brilliant street appeal. Looking at the exterior of the home you see the different wall step outs and the gable to the roof line. This adds more interest to the external appeal of the home. Stepping into the interior of the home you see and feel the expanse of the main living area. The large main bedroom has its own ensuite and built in robe and is separated from the rest of the bedrooms to provide privacy. Even though the living area is open the lounge, kitchen and dining have a nook area to segregate them without having walls.



**Total area 108.79 m<sup>2</sup>**  
**3 BEDROOMS**