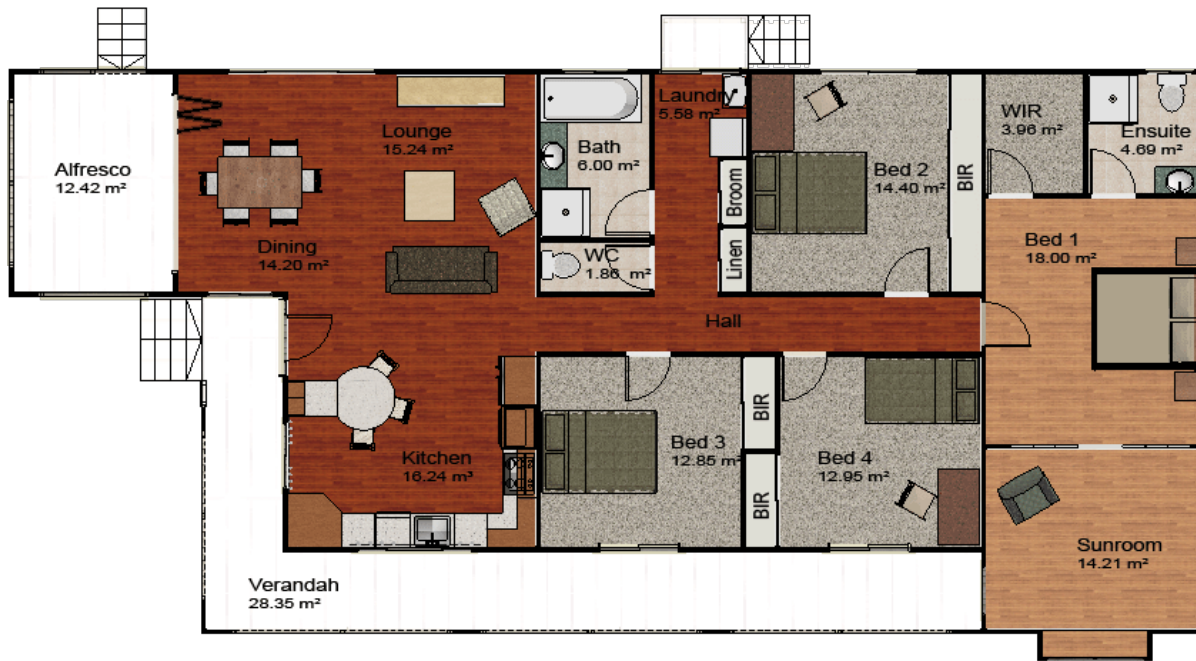




SCHEFE ENTERPRISES PTY LTD  
 T/A SCHEFE BUILDERS/ DIXON HOMES MARANOVA  
 QSBA LICENCE NO. 1053415  
 315 Northern Road, Roma  
 Ph.: (07) 4622 4107  
 Fax: (07) 4622 7294  
 www.schefebuilders.com.au

# QUEENSLANDERS NETHERDALE



The Netherdale combines the features of a traditional queenslander with modern elements to make this home suit the needs of today's families. The bedrooms offer the queenslander's generous space and the ensuite and lots of cupboard space offer the convenience of a modern home. A special highlight in this home are the bi-fold doors in the living area which allow to combine indoor and outdoor areas to one huge entertainment area. The sunroom which is attached to the main bedroom gives space for hobbies or can just be used as parents retreat.

21.89 m x 10.79 m

*floorplan unscaled*  
 (furniture is only artist's impression)



**Total area 204.76 m<sup>2</sup>**  
**4 BEDROOMS**  
**Bath & Ensuite**