



SCHEFE ENTERPRISES PTY LTD
 T/A SCHEFE BUILDERS/ DIXON HOMES MARANOA
 QSBA LICENCE NO. 1053415
 315 Northern Road, Roma
 Ph.: (07) 4622 4107
 Fax: (07) 4622 7294

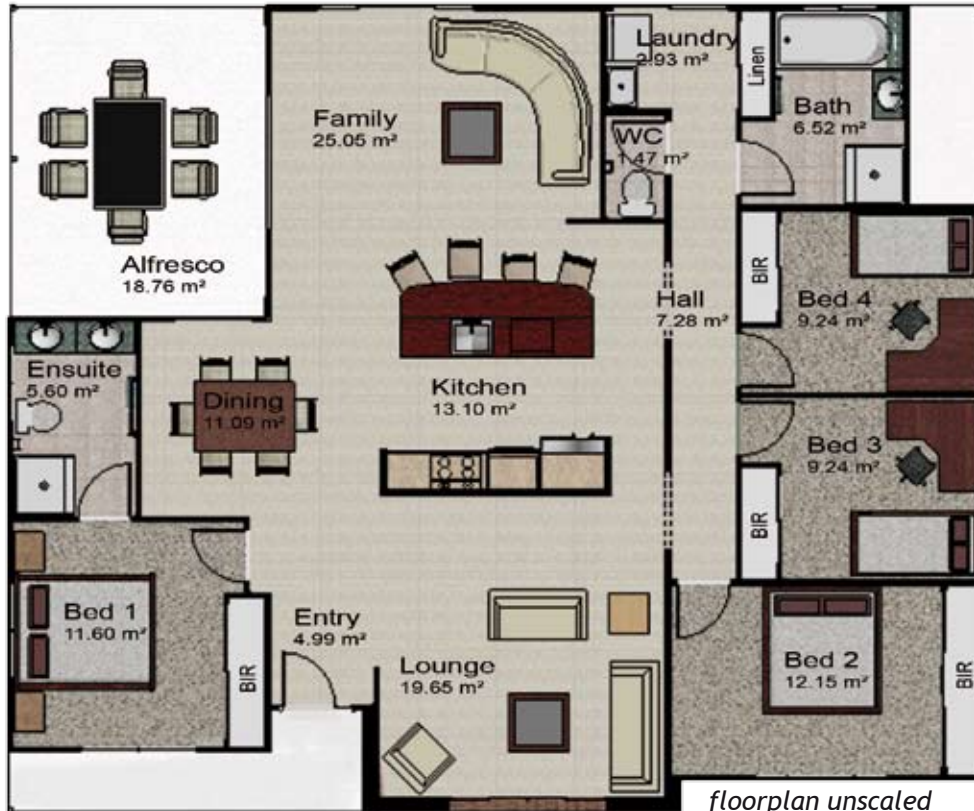
www.schefeblders.com.au

MODERN HOMES

MONTEGO

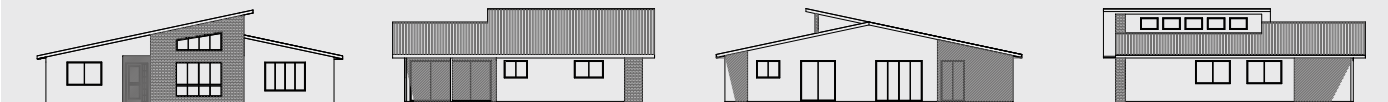


The Montego is designed to create the impression of space and light. This is achieved with up to 4 metre high ceilings in the lounge and kitchen area that have windows allowing the natural sunlight to stream in. The main bedroom is separate, giving parent's privacy. The kitchen is the hub of the home and is accessed easily from the main living rooms. The main living space is open plan and can be changed around to suit individual needs. The front facade of the home has a feature wall. This highlights the modern architecture incorporating the change of the building material.



floorplan unscaled
 (furniture is only artist's impression)

15.00m x 12.30 m



Total area 177.64 m²
4 BEDROOMS
Bath & Ensuite