



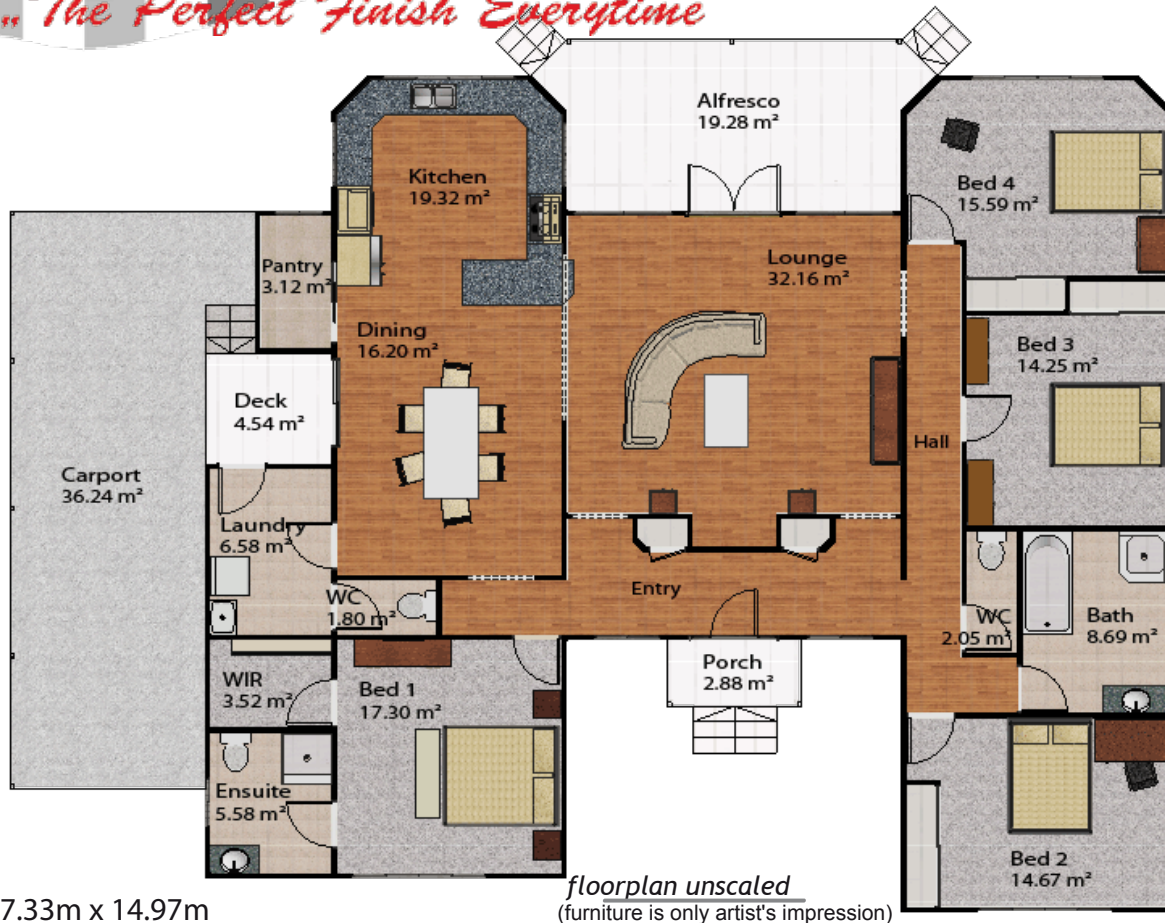
SCHEFE ENTERPRISES PTY LTD
 T/A SCHEFE BUILDERS/ DIXON HOMES MARANOA
 QSBA LICENCE NO. 1053415
 315 Northern Road, Roma
 Ph.: (07) 4622 4107
 Fax: (07) 4622 7294

www.schefeblders.com.au

TRADITIONAL HOMES
GABRIELLE



The Gabrielle Design is an adaption of the award winning „Willona“ design. This four bedroom home delivers such a superb balance of practical living space and eye-catching features. All four bedrooms are generous in size and have built in robes with the main bedroom featuring a walk in robe and ensuite. Having the large kitchen and walk in pantry make preparing family meals a joy. The carport easily doubles as an outdoor entertainment area and one of three toilets is located so that visitors don't have to walk throughout the home. Take time to relax on the alfresco deck with family and friends. This is also a great place for the children to play protected from the sun. Gabrielle has so much street appeal and delivers space and features that make this a wonderful home for a family.



17.33m x 14.97m



Total area 274.23 m²
4 BEDROOMS
Bath & Ensuite