



SCHEFE ENTERPRISES PTY LTD
 T/A SCHEFE BUILDERS/ DIXON HOMES MARANOVA
 QSBA LICENCE NO. 1053415
 315 Northern Road, Roma
 Ph.: (07) 4622 4107
 Fax: (07) 4622 7294

www.schefebuilders.com.au

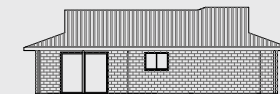
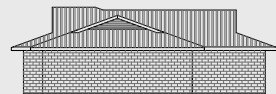
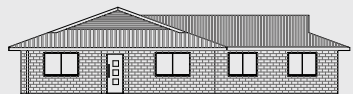
BRICK HOMES BYFIELD



16.49m x 12.59m

floorplan unscaled
 (furniture is only artist's impression)

The Byfield is a four bedroom family home. This home offers a large Family room. This room will become the hub of the home. It is situated close to the well appointed kitchen and the outdoor alfresco area. The lounge room is open and flows through into the dining room. All four bedrooms are a good size and the main bedroom has an ensuite with a double vanity.



Total area 171.07 m²
4 BEDROOMS
Bath & Ensuite